

Position Statement on the Prescribing of Footwear

Ipswich and East Suffolk CCG and West Suffolk CCG **do not** support the prescribing of footwear for patients with no clinical need, such as those requiring shoes temporarily to fit over bandaging. If required for this reason, patients should be advised to purchase an appropriate product over the counter (OTC).

Patients requiring footwear, which is **not** a Plantar Offloading Device, for a temporary purpose such as to wear over bandaging, should be advised to purchase an appropriate product over the counter (OTC).

Kerraped All Purpose Boots can also be supplied via NHS Supply Chain.

Small (UK shoe size 2 to 5.5)	ELY253
Medium (UK shoe size 6 to 7.5)	ELY252
Large (UK shoe size 8 to 10)	ELY251
Extra Large (UK shoe size 10.5 to 13)	ELY250

Offloading Devices

Only offloading devices are appropriate for prescribing. These are specialist footwear and orthoses recommended for patients at moderate to high risk of developing a diabetic foot problem ([NICE](#)). Plantar Offloading Devices are commonly used in clinical practice for the prevention of diabetic foot problems and treatment of plantar ulcers in the diabetic foot.

Clinicians must ensure the use of plantar pressure offloading devices is part of a robust and clear local pathway for the prevention and management of diabetic foot problems. Therefore, these devices should only be prescribed after individual patient assessment by an appropriately skilled practitioner; this is likely to be via a foot protection service. This is in line with recommendations made by PrescQIPP.

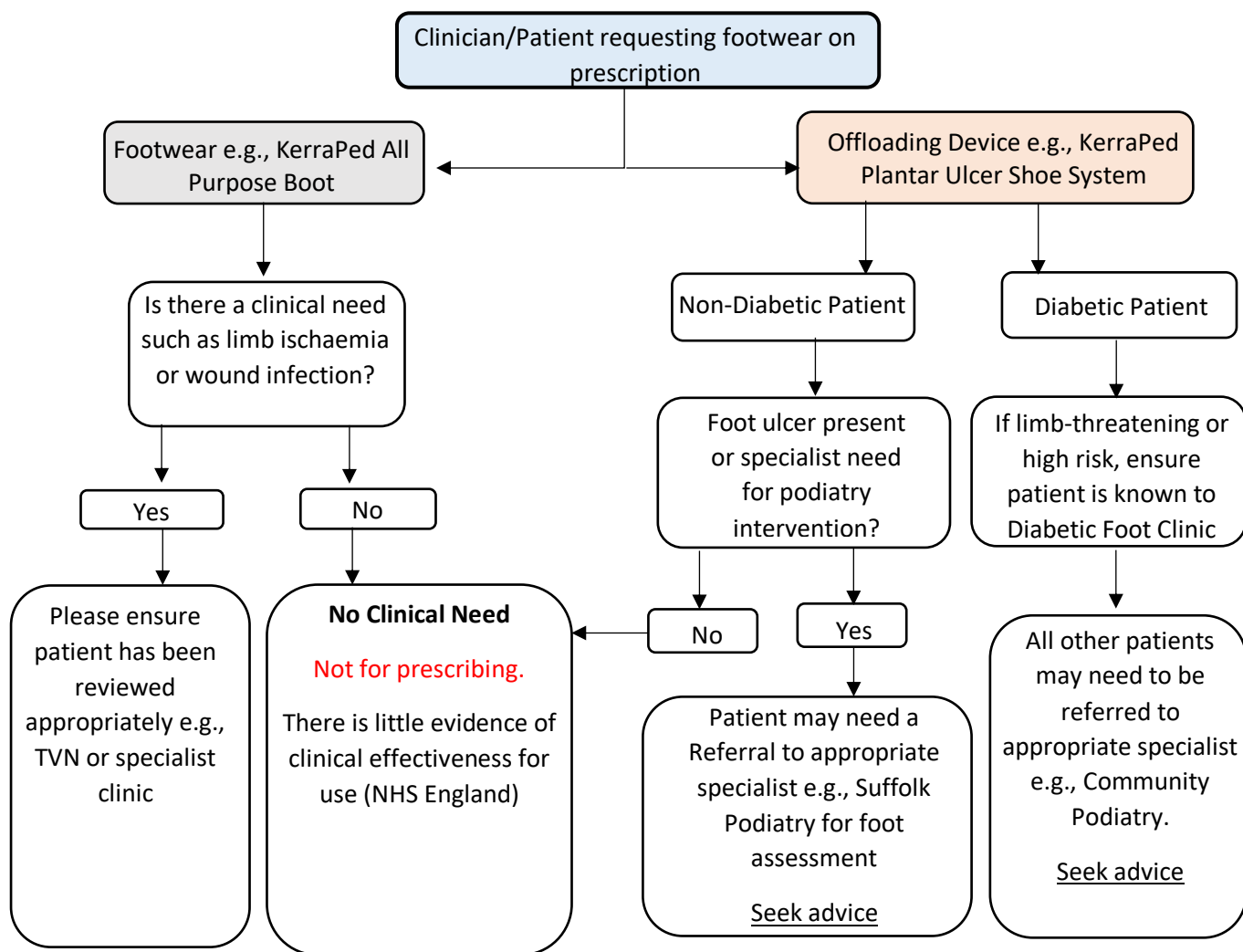
Only to be prescribed on recommendation from specialist practitioner: Diabetic Foot Clinic, Podiatry or Tissue Viability Nurse

Useful Contacts

PALS (Patient Advice and Liaison Service) - pals@suffolk.nhs.uk or 0800 389 6819

CCG Medicines Management Appliances Nurses

iesccg.medsmanagement@nhs.net wscgg.medsmanteam@nhs.net



Footwear required over bandaging

- Consider re-assessing lower limb and ABPI to look at alternative treatments if required e.g., compression leg ulcer hosiery kits
- For wet legs, liaise with lymphoedema clinics for advice

District Nursing Teams Only

If still required, Kerraped All Purpose Boots can be supplied via NHS Supply Chain

Must Risk Assess Please ensure appropriate risk assessments (including falls) is completed prior to supplying

References

¹ [Recommendations | Diabetic foot problems: prevention and management | Guidance | NICE](#)

² The PrescQIPP PROP-List (Products to Review for Optimising Prescribing)