

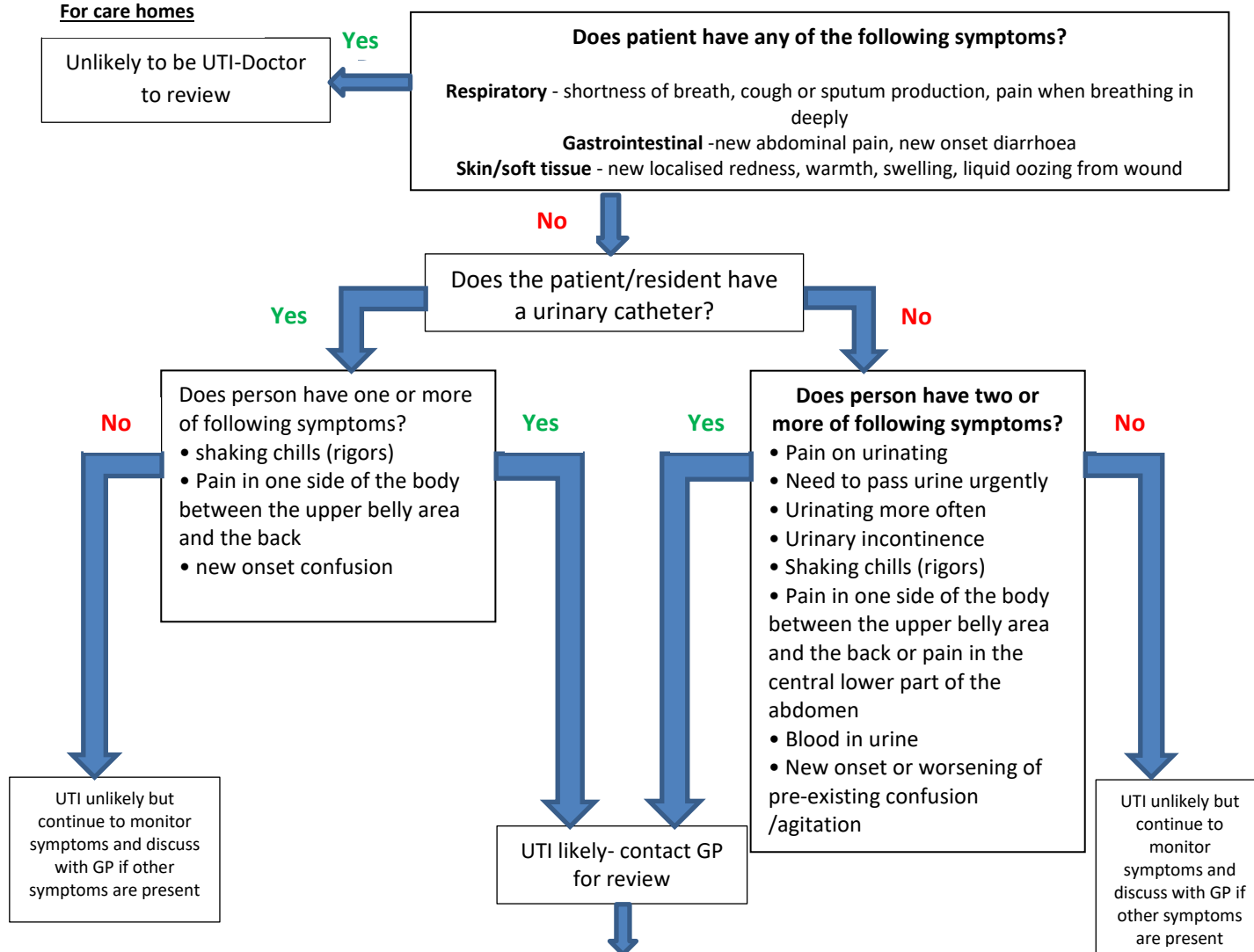
Diagnosis and Management of UTIs in the Older Adults (65+)

Decision aid to guide management of people with fever defined as temperature >37.9°C or 1.5°C increase above baseline occurring on at least two occasions in last 12 hours. Hypothermia (low temperature of <36°C) may also indicate infection, especially those with comorbidities.

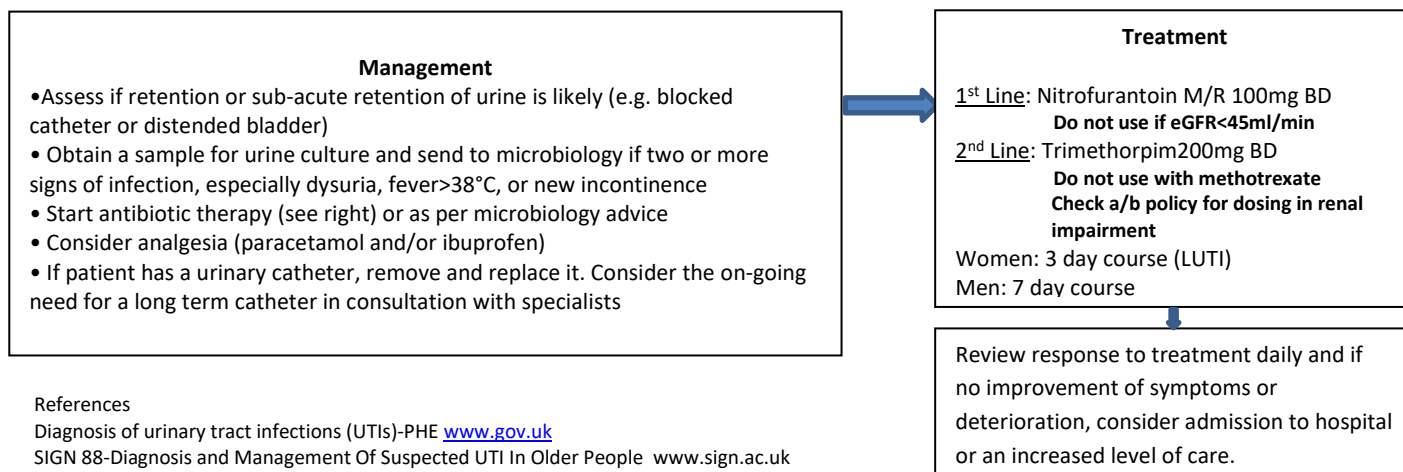
Be alert to non-specific symptoms of infection such as abdominal pain, alteration of behaviour or loss of diabetes control

DO NOT routinely use dipstick test in diagnosis of UTI in older people (65+)

For care homes



For GPs/Nurses



References

Diagnosis of urinary tract infections (UTIs)-PHE www.gov.uk
SIGN 88-Diagnosis and Management Of Suspected UTI In Older People www.sign.ac.uk