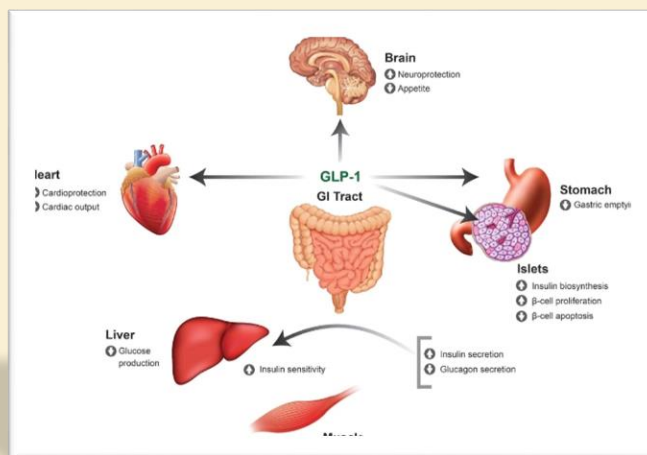


Face to face GLP-1Ra Workshop



Interactive workshop highlights

7 PM – 8 PM:

Understanding GLP-1 Receptor Agonists

- To understand the incretin effect
- To understand the effects of Glucagon-like Peptide-1 (GLP-1) in humans
- To understand the effects of GLP-1 receptor agonists in type 2 diabetes
- To explore ways to ensure timely initiation of GLP-1 receptor agonists

8 PM – 8 30 PM:

Dinner and networking

8 30 PM – 9 30 PM:

Practicalities of starting GLP-Ra's treatment

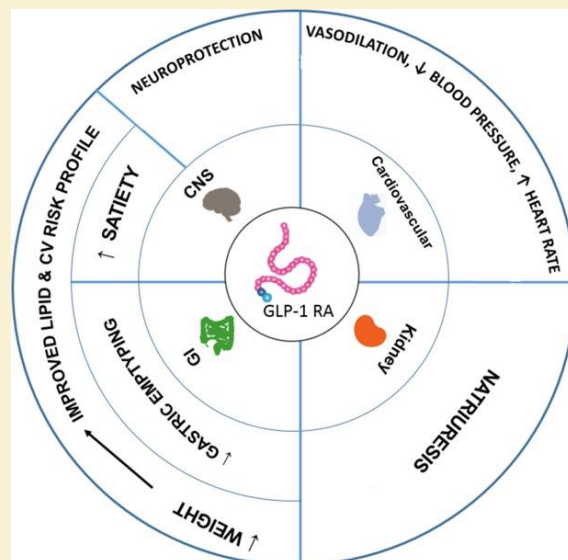
- When to start GLP-1Ras
- How to start GLP-1Ras
- To explore differences between the GLP-1 Receptor Agonists with a human GLP-1 backbone
- To examine existing guidelines and their application to practice
- To explore the impact of cardiovascular data on evolving guidance
- To use case studies to illustrate key points

When: Wednesday, 28th of July 2021 (7 PM onwards)

Where: Holiday Inn, London Rd, Ipswich IP2 0UA

Speaker: Dr Sanjeev Sharma
Consultant – Diabetes & Endocrinology
Ipswich Hospital (ESNEFT)

Registration: Email [cobbold matthew@network.Lilly.com](mailto:cobbold_matthew@network.Lilly.com) or
Call at mobile: 07393 244151



*This meeting has been developed, organised and funded by
Eli Lilly and Company.*

Lilly