
Increasing the take-up of Cervical Screening in Suffolk



Extended Access Service

- A new service is being launched to improve the take-up of cervical screening with the aim of preventing cancer.
- Managed by Suffolk GP Federation on behalf of the GP practices and includes evening and weekend screening appointments via Suffolk GP+

**HAVING SECOND
THOUGHTS ABOUT
BOOKING YOUR
SMEAR TEST BECAUSE
OF CORONAVIRUS?
THERE'S NO
TO WORRY.**

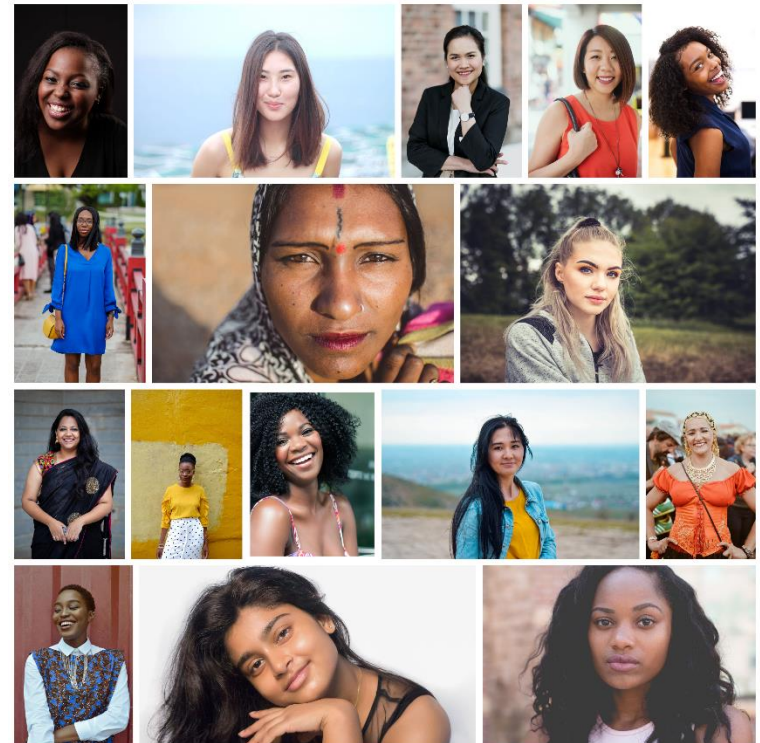


**Very
Important
Invitation**



Hard to reach groups

- Data shows that some groups are less likely to have a smear test
 - Women between 25 and 49 years old
 - women living with disabilities and physical and mental health issues
 - women from some ethnic communities



Co-production

- What we have learnt...
 - Communications that are inclusive : recognisable faces, easy read, gender neutral, culturally sensitive with translated versions
 - Educational appointments
 - To offer longer appointments for those that need them
 - Community buddy schemes - bring along support
 - to offer reasonable adjustments to all that need them
 - We can't presume that anyone is not sexually active



How you can help

- Explain that it will always be a female nurse
- Offer a longer appointment, if appropriate
- Flag on S1 if the patient needs any reasonable adjustments
- Make sure that aftercare is available for those with disabilities
- Make sure that easy read literature is available
- Review your patients and contact them, if you can
- Direct patients to our Facebook page support group for additional support

**WILL YOU NEED ANY
ADDITIONAL SUPPORT
AT YOUR SMEAR
TEST APPOINTMENT?
LET US KNOW WHEN
YOU BOOK, AND
WE'LL TAKE CARE
OF THE REST.**



**Very
Important
Invitation**



Making Contact

Project Manager

Melissa.tooke@Suffolkfed.org.uk

GP+ Service Manager

Katherine.a-turvey@suffolkfed.org.uk

Clinical Lead

Catriona.McCallum@suffolkfed.org.uk

Facebook

<https://www.facebook.com/Cervical.Screening.Access>