

CANCER CARE NAVIGATORS

ANDREW YAGER

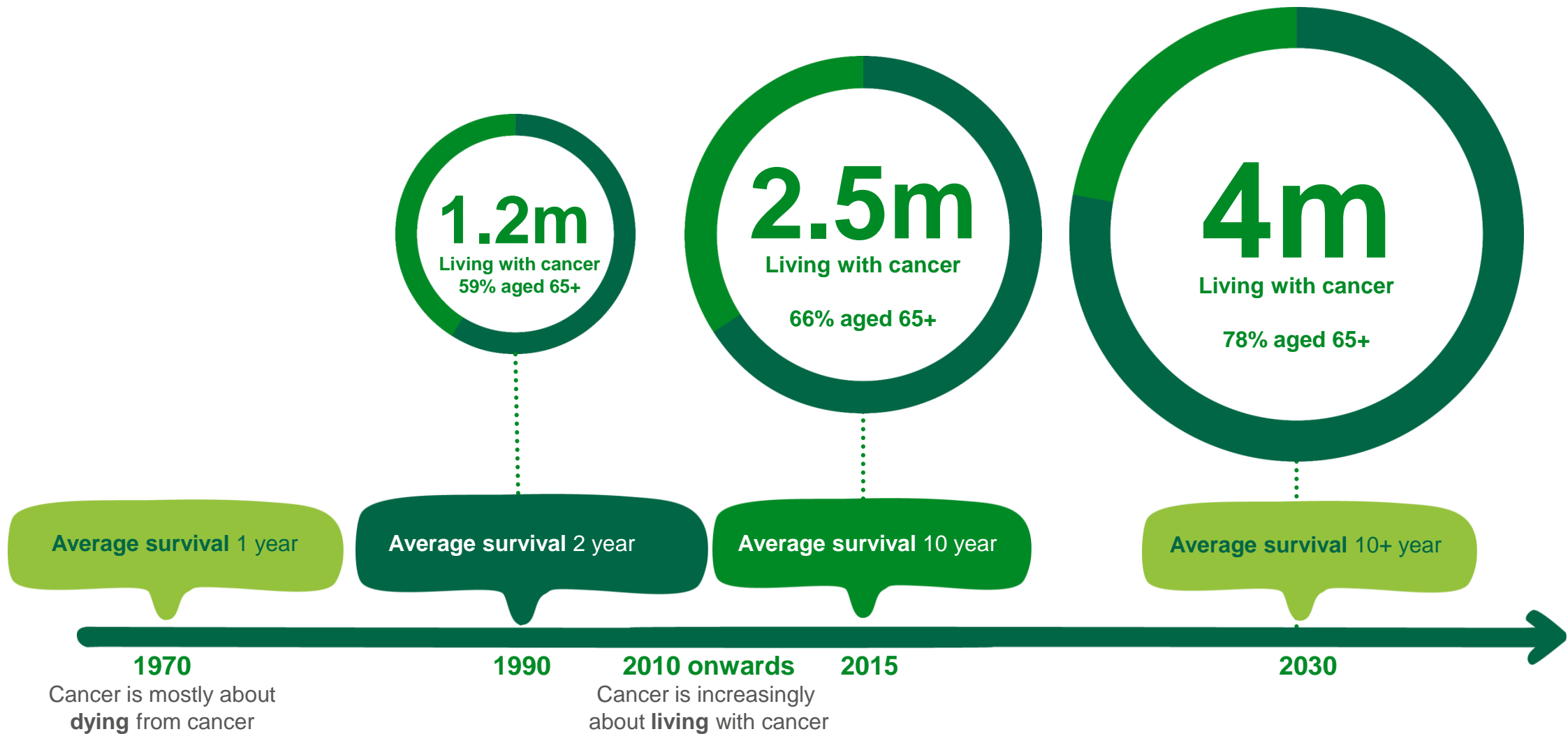
MACMILLAN GP EAST AND WEST SUFFOLK

WEST SUFFOLK CCG BOARD AND CANCER LEAD

a.yager@nhs.net

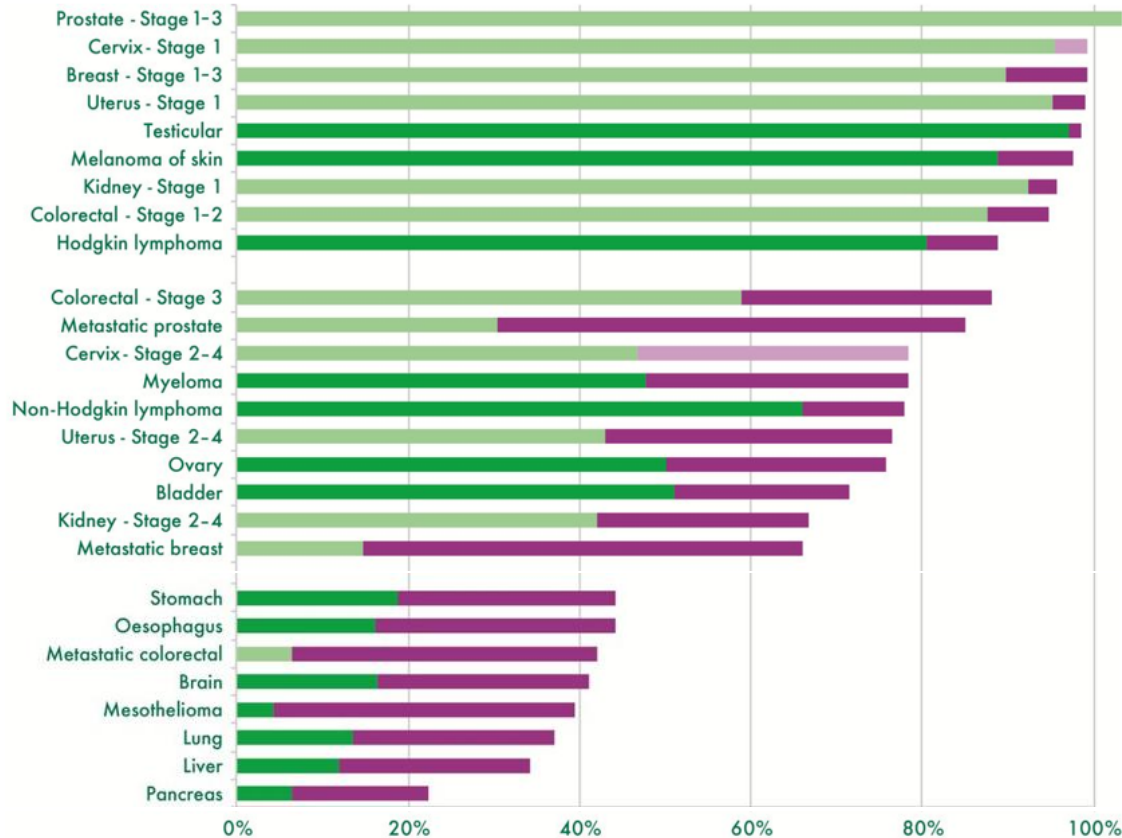
07917454535

The changing cancer story



Three cancer groups

“LIVING WITH AND BEYOND CANCER”



Group 1
Many live for more than a decade

Group 2
Most similar to a long-term condition

Group 3
Survival for the majority is short term

Survival rate

5-year survival: ■ Higher confidence in data ■ Lower confidence in data

1-year survival: ■ Higher confidence in data ■ Lower confidence in data

McConnell, H. White, R. And Maher, J. *Explaining the different complexity, intensity and longevity of broad clinical needs.* 2015.

Personalised Self-Managed Follow up (PSMFU)

- **Post treatment follow up is changing**
- Following risk stratification, follow up will be more remote with less regular hospital based appointments
- Easy access into the service when requested by the patient.
- Primary care not being asked to do the follow up
- Starting with Breast ,Colorectal, and Prostate

MIND THE GAP

All aware of the slicing and dicing nature of
NHS care

& Experienced the primary – secondary
– tertiary care interfaces

Patients describe the experience of
finishing treatment and going out
into the community like:

`falling off a cliff`

NATIONAL PATIENT EXPERIENCE SURVEY

111,000 ELIGIBLE PARTICIPANTS – 68,000 RESPONSES 61%

	WSCCG	I&ECCG	NEE
Information on condition and Rx from GP	96%	96%	96%
Support during Rx from GP	64%	57%	54%
Support from Health and Social care after Rx	45%	46%	39%

System Solutions Cancer Care Navigator Service

Some help is here.....

- Macmillan supplied funding for 11 Band 4 **Cancer Care Navigators**
- Based in Trusts but outward facing into Localities/Practices/Communities
- 3 WS, 4 ES and 4 NEE 1-2 years initially
- Offer **social psychological system support & signposting – 70%**
- Work with Patients, Cancer Nurse Specialists and Practice Nurses/GPs
- West Suffolk started 2019 East Suffolk and North East Essex Nov 2020
- Can take referrals directly from primary care/patient/secondary care:

01284 713595 Mon-Friday 9-5. Answering machine otherwise

Email : macmillan.navigators@wsh.nhs.uk

Cancer Care Navigator Service

Helping patients access support for everything cancer throws their way

Get in touch:

Monday to Friday 9:00am – 5:00pm

Ipswich Hospital: 01473 702125

Colchester Hospital: 01206 487288

cancercarenavigators@esneft.nhs.uk



East Suffolk and
North Essex
NHS Foundation Trust

East of England
Cancer Alliance



In partnership with

MACMILLAN
CANCER SUPPORT

EAST SUFFOLK PCN ALLOCATIONS

- NIKKI DURBIN BLIS, DHG South, East Ipswich
- TRACY MARKWELL North East Coastal, South Rural
- SARAH LAWRANCE East Suffolk
- TORI GREEN North East Ipswich, Orwell

Cancer Care Navigator Service

Monday to Friday
9:00am - 5:00pm



We're here for you

Offering practical support and advice:

- Helping you to improve your health and wellbeing
- Pointing you towards relevant cancer support groups and courses
- Referring you for emotional support where needed
- Advising you on how to talk to family friends about cancer
- Linking you with services and support in the local area
- Facilitating access to support for any practical needs

Colchester Team

Tel: 01206 487 288

Email: cancercarenavigators@esneft.nhs.uk

Ipswich Team

Tel: 01473 702 125

Email: cancercarenavigators@esneft.nhs.uk

MACMILLAN
CANCER SUPPORT
RIGHT THERE WITH YOU



East Suffolk and North Essex
NHS Foundation Trust

East of England
Cancer Alliance 