



Climate crisis = Health crisis or health opportunity?

For discussion/information

Presenter Andrew Urquhart, Sustainability Lead

Email – andrew.urquhart@suffolk.nhs.uk



Today is national clean air day

Ipswich and East Suffolk
Clinical Commissioning Group



Sustainability, climate change & health



- The average global temperature rose by 1 degree in the last century. Caused by release of green house gasses leading to rising global temperatures
- This is creating an instability in Earth's systems leading to climate change. This means...
- More extreme weather events
- Heat waves; 7,000 extra heat related deaths.
- More flooding; mental health spikes after flood events.
- More pollution- links to cancer, strokes, heart disease, dementia etc.
- Higher UV exposure linked to increases in skin cancer & cataracts.
- **Climate change = Increased demand for clinical services.**

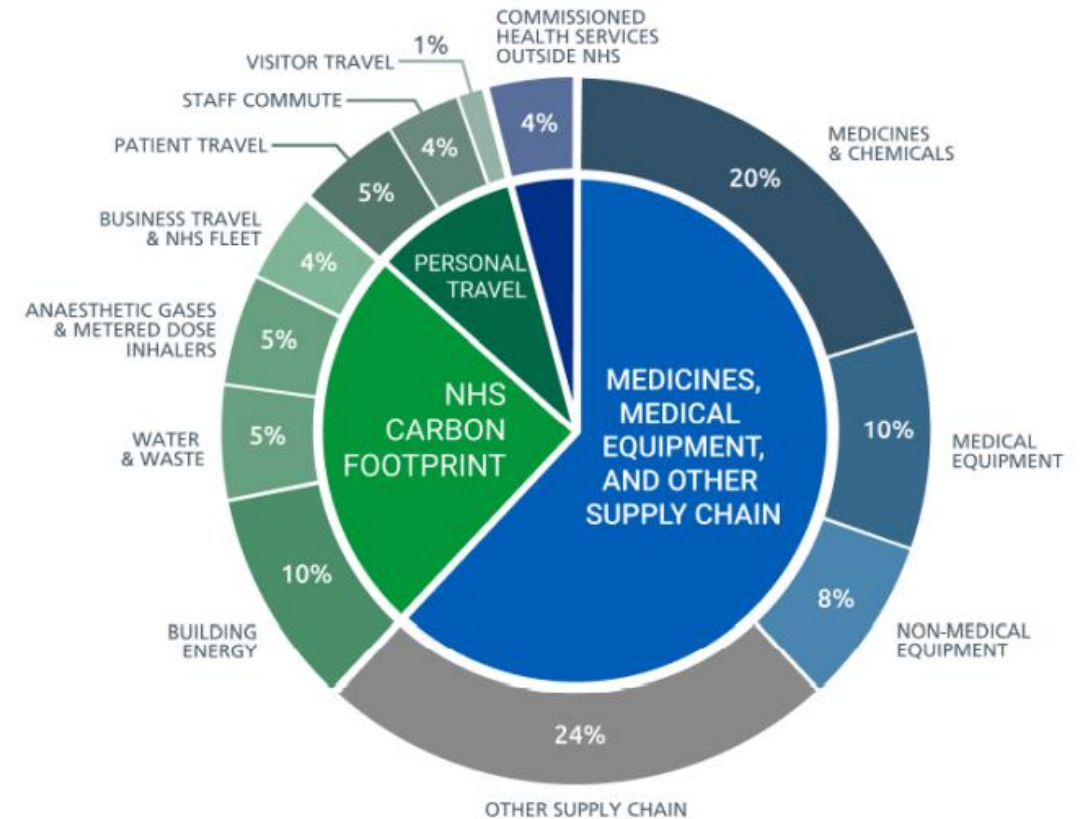
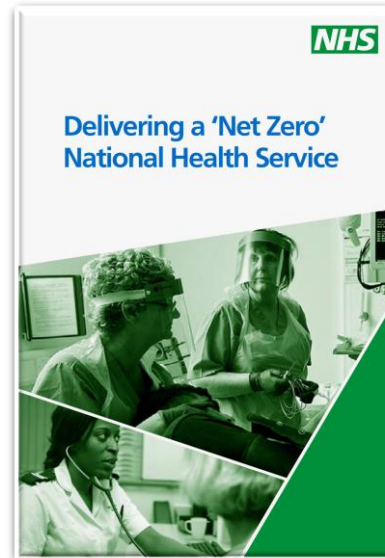


Climate change, carbon & next steps

NHS England and NHS Improvement @NHSEngland · Oct 1
The NHS has today adopted a multiyear plan to become the world's first carbon net zero national health system. Read the Net Zero report to find out more. #GreenerNHS [england.nhs.uk/2020/10/nhs-be...](https://www.england.nhs.uk/2020/10/nhs-be...)



394 405 336



- Green Plan Support Tool will be provided by **1 October** to support the development of Green Plans
- Revised green Plans must be submitted by **April 2022**



The Green Plan Aim & Objectives- deliver a net zero carbon NHS....

Reduce air pollution

Tackling & reducing
poverty & health
inequality

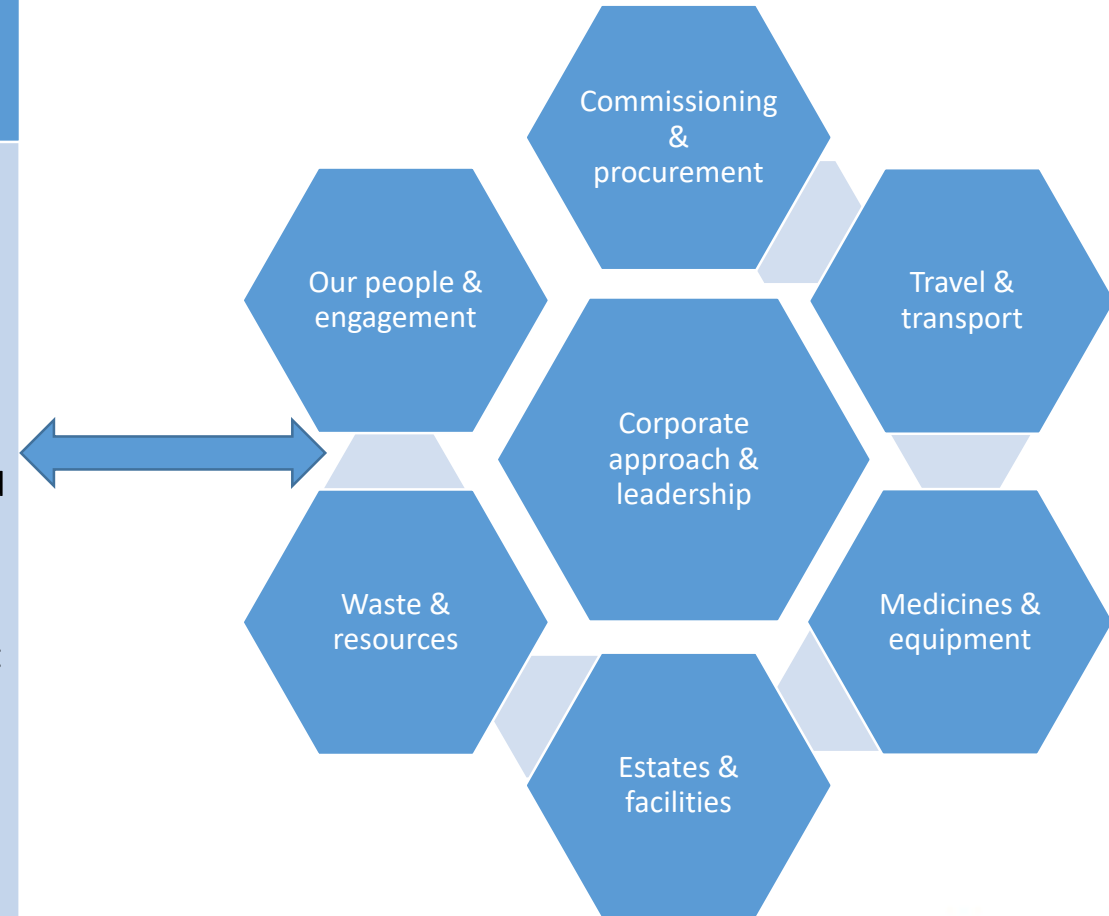
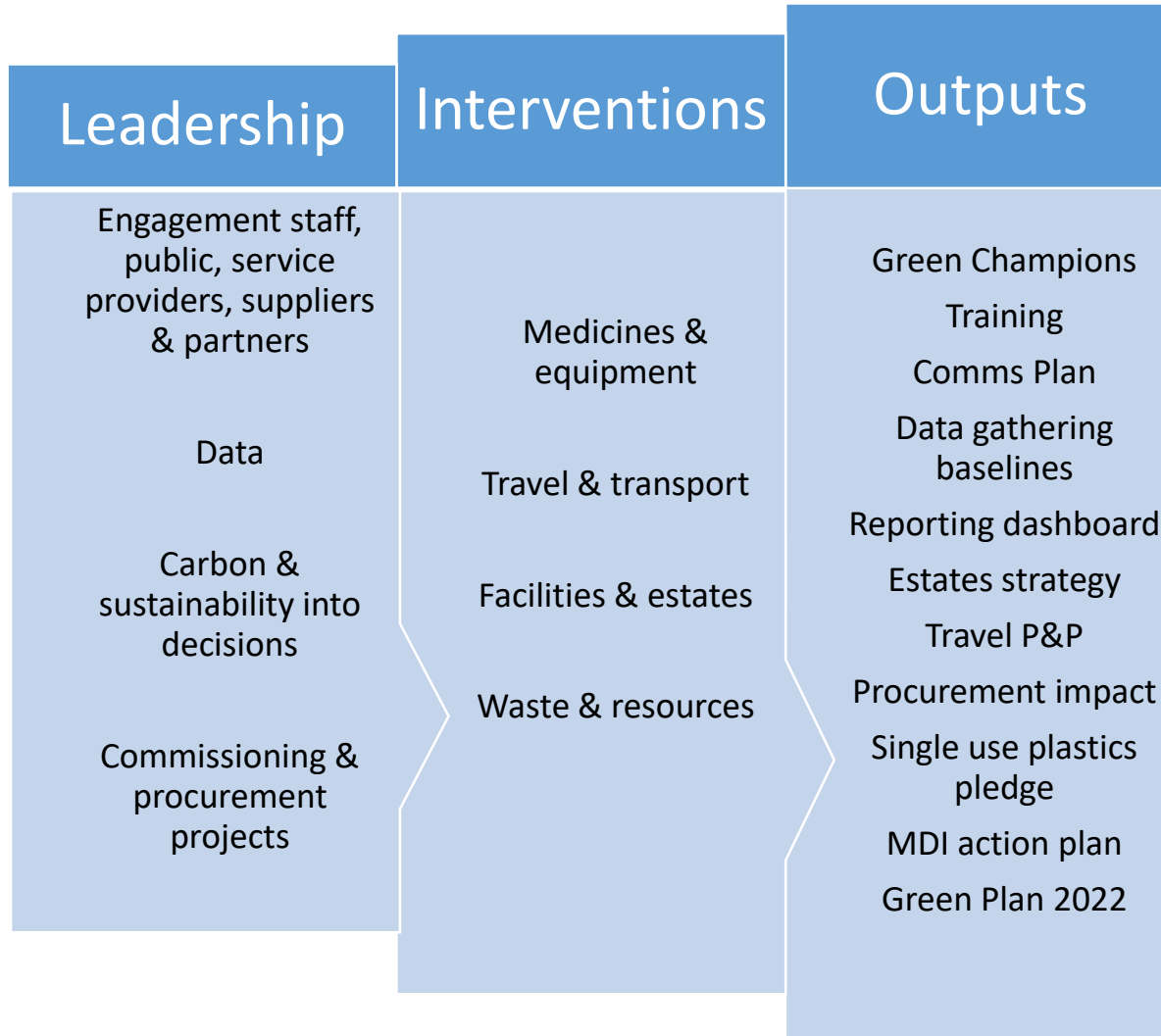
Deliver NHS long
term plan (VFM,
digital, staff, think
differently)

Leadership (actions,
partnerships,
engagement &
transparency)

Reduce the impact
of climate change
on population
health

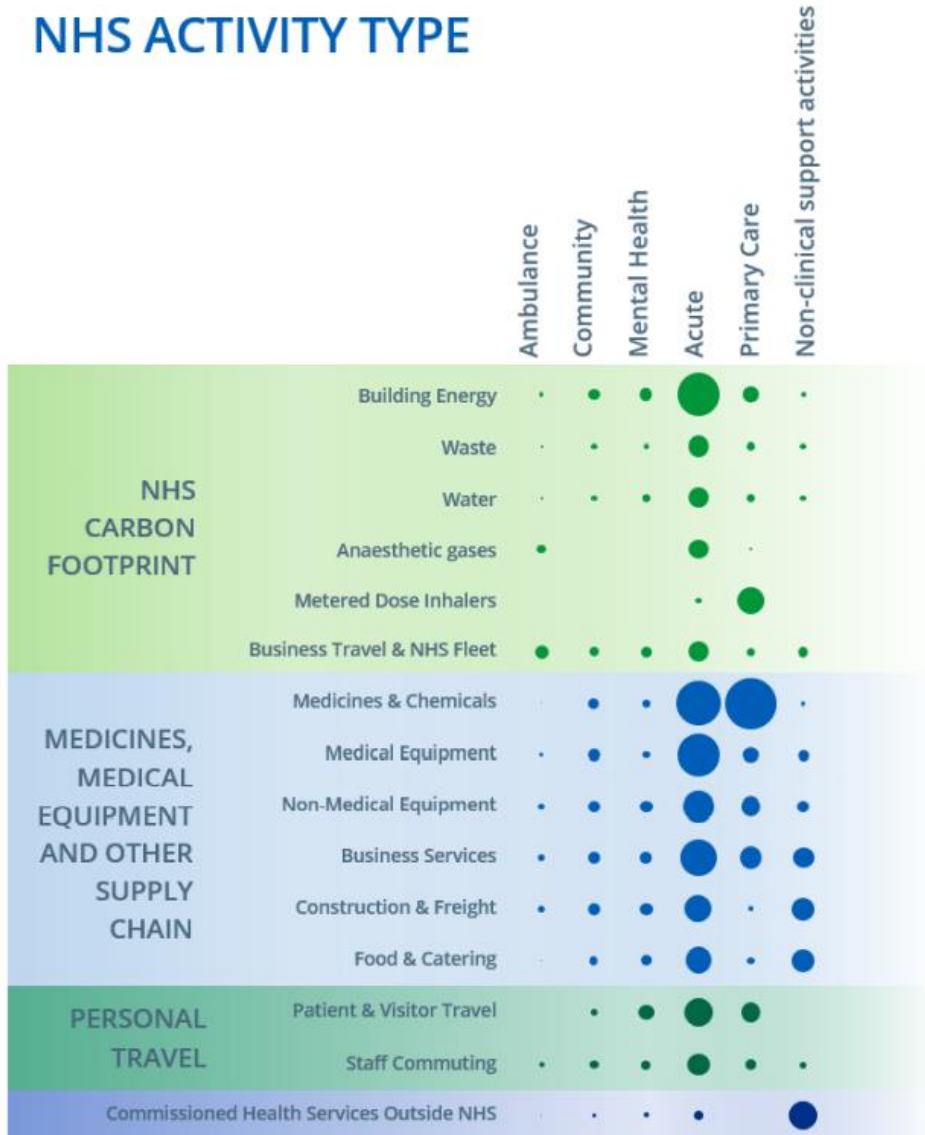


Green Action Plan



What you can do

NHS ACTIVITY TYPE



- Reduce patient & staff **travel** = **Digital**
 - Swap **MDI & DPI** use
 - Decarbonise **buildings**
 - Do it in **bite sized** chunks
 - Start using the tools below
- **Green Impact for health toolkit** [Green Impact](#)
- **Greener Practice** [Greener Practice](#)
- [Who we are | Centre for Sustainable Healthcare](#)

